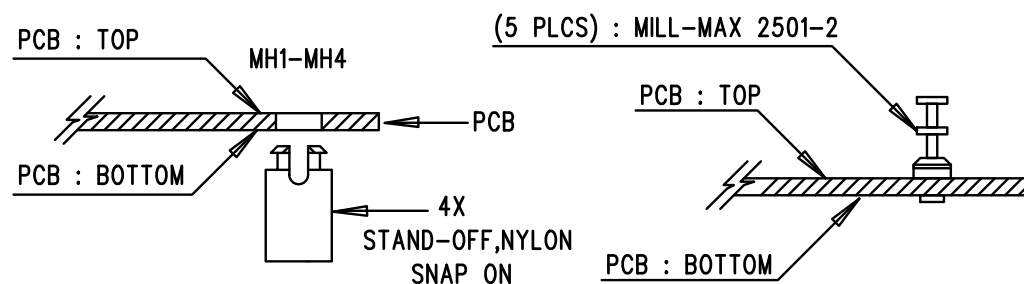


# REVISION HISTORY

ECO	REV	DESCRIPTION	APPR	DATE
-	1	PRODUCTION FAB	J.NOON	03-20-19

## NOTES: UNLESS OTHERWISE SPECIFIED

1. WORKMANSHIP SHALL BE IN ACCORDANCE WITH IPC-A-610.
2. ASSEMBLY PROCESS SHALL INCLUDE: REFLOW SOLDER TOP SIDE SMD. MAXIMUM SOLDER TEMPERATURE IS 240 DEGREES CELSIUS.
3. PARTS TO OMIT WILL BE SPECIFIED ON THE BILL OF MATERIALS. LOCATIONS OF OMITTED PARTS SHALL BE FREE OF SOLDER. MASK THE SOLDER STENCIL WHERE SMT PARTS ARE OMITTED.
4. INSTALL SHUNTS AS SHOWN ON ASSY DRAWING.
5. DEPANELIZE BOARDS AFTER ASSEMBLY AND ROUTE-OUT THE BREAKOUT TABS ON FOUR SIDES OF THE BOARD EDGE.
6. DO NOT APPLY ANY KIND OF ASSEMBLY STAMP OR QA STAMP TO ANY BOARD.
7. INSTALL TURRETS AND 4 STANDOFFS AT LOCATIONS SHOWN BELOW:



## APPROVALS

PCB DES.	NC
APP ENG.	J.NOON



1630 MCCARTHY BLVD  
 MILPITAS, CA 95035  
 PH: (408)432-1900  
 www.Linear.com  
 LTC CONFIDENTIAL-  
 FOR CUSTOMER USE ONLY

TITLE: TOP ASSEMBLY DRAWING:  
 40V, 2A BUCK BOOST DC/DC CONVERTER

SIZE	IC NO. LTC3115-1	REV.
N/A	DEMO CIRCUIT 1687B	1

SCALE = NONE

FILENAME: DC1687A-2.PCB

SHT 1 of 2